

CATALOGUE
THE MATERIAL, FROM HEART TO HANDS





Index

INTRO

One passion, now a reality 2

TABLES

Spiogeo 01 8
254 01 10
Mistò 01 12
Fratino 01 14
Hidro 01 16
Magreglio 01 18
Chucina 01 20
Settecento 01 22

LAMPS

55CA 01 24
55C 01 28
68D 01 30
73C 01 32
190C 01 34
185D 01 36

SEATS

NOTES

38

40

One passion, now a reality

A passion for wood, as a working element, has always accompanied me in life since I was a child. Wood is alive, wood is beautiful, wood is fragrant, wood is smooth, fibrous, veined, sweet, strong. Wood is special. Wood furnishes our homes, wood furnishes our existence.





Expert hands work the materials. Knowing touches guided by dreams, aspirations and visions, creating objects with a soul. Furniture that does not limit itself to simply furnish, but to give life. Products of surprising design, materials, studied, loved... unique.

A meeting
between soul
and matter
giving life to
expression
and dreams

Salvage meet solid wood
and iron around a “Table”,
sharing tradition and
modernity.

Tables



Spiogeo 01

THE SECRECY REVEALED

MEASUREMENTS: 286 x 107 x 78 cm



A solid ashwood top, a red cedarwood inset and two solid African mahogany headboards are contoured by two ashwood poles with a circular section. In the middle of the table there is a white inspection glass supported by an iron sliding structure and fixing-rods.

Unique piece, can be replicated upon request.



254 01

THE INDUSTRIOUSNESS OF DAILY LIFE
MEASUREMENTS: 254 X 92 X 78 CM



Two layers of solid Croatian oak, wax finish, tied to an iron mast. The legs are framed to an old beam, reclaimed from an old sanding machine. Two steel bolts have been secured at one end, a vintage steering wheel at the other end.

Unique piece, can be replicated upon request.



Mistò 01

THE BALANCE OF ASYMMETRY

MEASUREMENTS: 222 X AVERAGE 72 X 78 CM



The top is made by a large solid cedarwood top and two beams. One beam has been crafted from a spruce and one from a chestnut. Both pieces have then been joint together. The natural waving of the beams results in a width variation, as well as an imbalance of the legs.

Unique piece, can be replicated upon request.



Fratino 01

THE CONVIVIALITY OF AUSTERITY
MEASUREMENTS: 300 X 90 X 78 CM



The top consists of polished zebrawood, shellac finished, mounted on iron legs which have been assembled with rectangular tubulars and plates. The legs are pinned to a solid zebrawood beam. On each end two Carrara marble wedges have been inserted.

Unique piece, can be replicated upon request.



Hidro 01

THE WATER SOLIDITY
MEASUREMENTS: 250 X 90 X 80 CM



A solid tulipwood top, sanded to a smooth finish, rested on four metallic arms. Such arms have perforated discs and have been reclaimed from an old heating system. Unique piece.



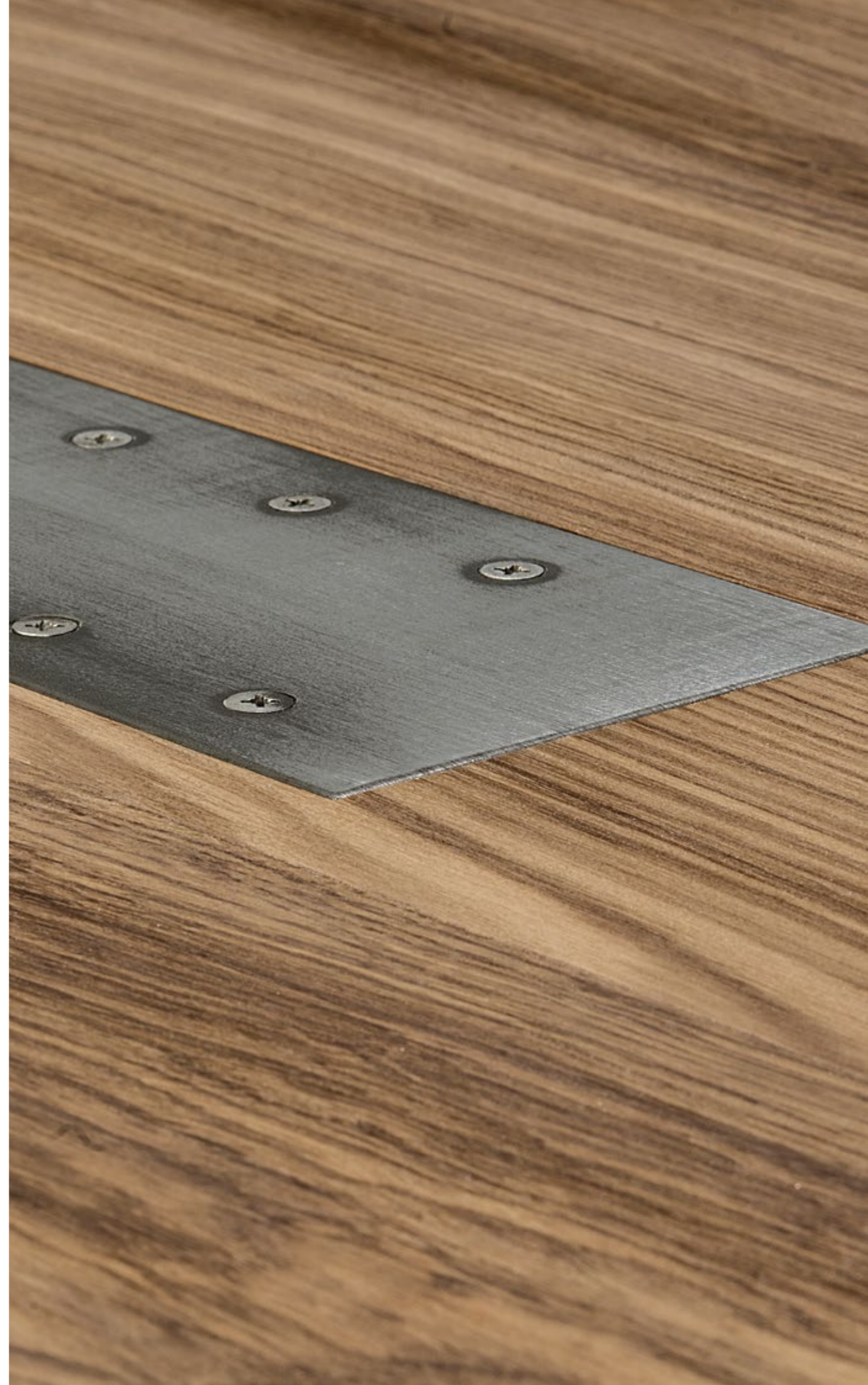
Magreglio 01

THE REBIRTH OF THE ANTIQUE
MEASUREMENTS: 294 X 88 X 79 CM



A solid Beli wood top has been inserted onto the legs, using mortise and tenon. The legs have been reclaimed by chestnut beams, dating back to the late of 19th Century. The beams were used to support the roof an old Lombardy country house.

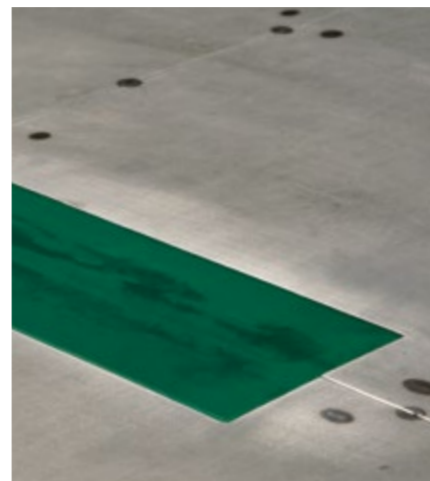
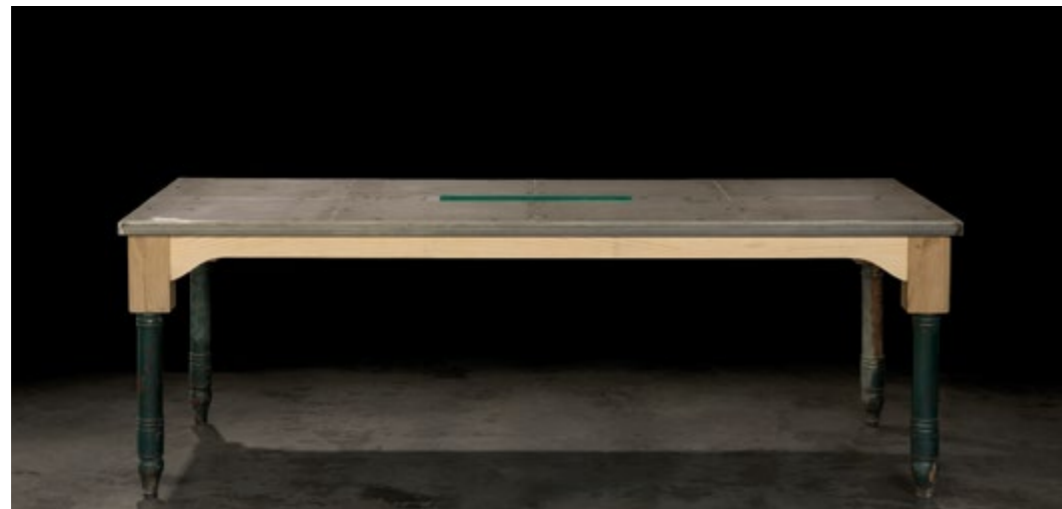
Unique piece, can be replicated upon request.



Chucina 01

THE SOFTNESS OF IRON

MEASUREMENTS: 240 X 90 X 81 CM



A truly special table, born by the processing and welding of six iron plates. An Oven-fired painted and polished top that feels smooth and soft to the touch. The top sits on four wooden legs, reclaimed by old tavern tables, dating back to the beginning of the 20th Century.

Unique piece.



Settecento 01

THE HARMONY OF DIVERSITY

MEASUREMENTS: 185 X 86 X 75 CM



Salvaged Venetian-style. Legs and sides from the 50's and 60's have both been revarnished. An overlapped top of solid wood composed of four origins: old planks of brushed larch, planks of solid cedar, planks of olive ash and planks of solid durmast.

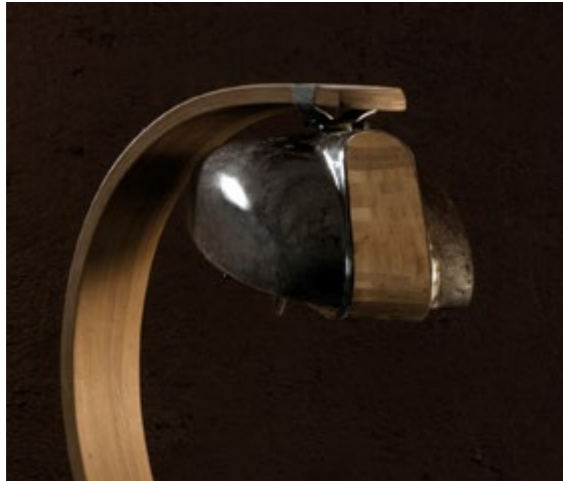
Unique piece.



A tank of light enhances
the colours of the interiors
dedicated to our work,
to our home, to our
serenity.

Lamps





55CA 01

UNIQUE PIECE
HEIGHT: 55 CM

Curved table lamp in solid Afrormosia wood, with light source obtained from a hung and refurbished "italjet" tank. The base is made of solid iron, 10 mm thick, with 4 screw-on adjustable rubber feet.



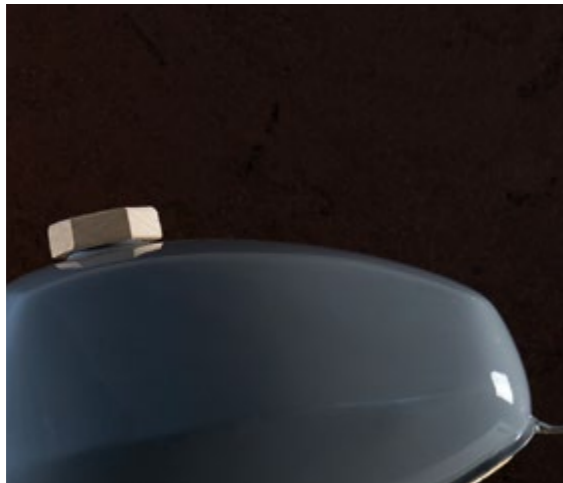


55C 01

UNIQUE PIECE
HEIGHT: 55 CM

Afromosia solid wood table lamp. Its light source being reclaimed from an old refurbished tank. The base is made of solid iron, 10 mm in thickness, with 4 screw-on adjustable rubber feet.





68D 01

UNIQUE PIECE
HEIGHT: 68 CM

Table lamp, model "tojane '70" in solid Beli wood, with light source obtained from a regenerated "Motobi" tank. The base is made of solid iron, 10 mm in thickness, with 4 screw-on adjustable rubber feet.



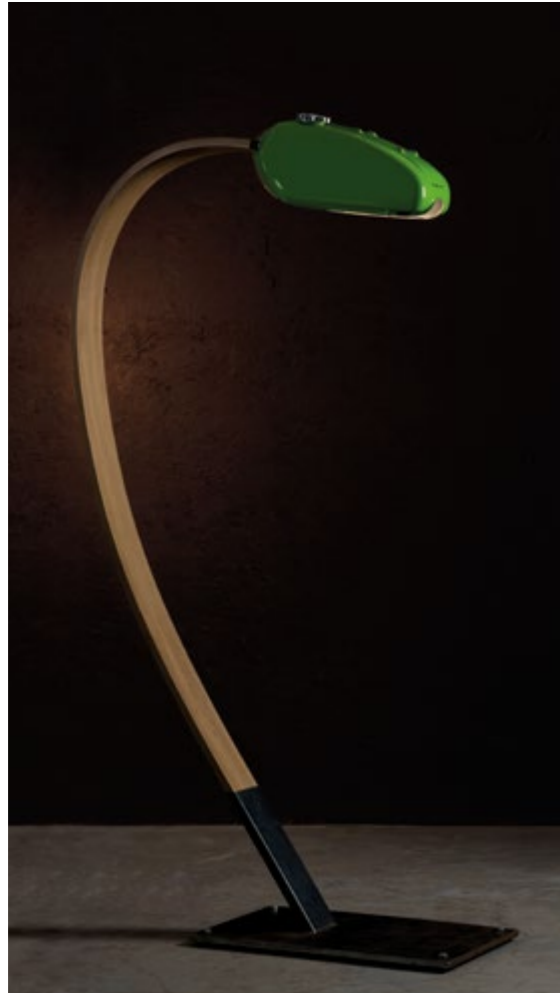


73C 01

UNIQUE PIECE
HEIGHT: 73 CM

Bent table lamp, made of solid Afrormosia wood, its light source being a refurbished, drop-like "Guzzi" tank. The base is made of solid iron, 10 mm thick, completed with 4 screw-on adjustable rubber feet.





190C 01

UNIQUE PIECE
HEIGHT: 190 CM

Curved floor lamp, made of solid Afrormosia wood, its light source being a refurbished 70's "Kawasaki" tank. The base is made of solid iron, 15mm in thickness, completed with 4 screw-on adjustable rubber feet.





185D 01

UNIQUE PIECE
HEIGHT: 185 CM

Floor lamp with Beli wood stem and light source obtained from a regenerated original 60's "Gilera" tank. The base is made of solid iron, 15 mm in thickness, completed with 4 screw-on adjustable rubber feet.



The evolution of the specie.
History repeats and rein-
vents itself, it gives life to
endless interpretations of
the same concept.

Seats



Prices upon request.

info@herol.it

Herol's creations are unique and numbered pieces.

Herol's creations are made of 100% natural and refined wood, handcrafted, no extra treatment added. Possible movements, cracks and changes in wood reflect the unique characteristics of such products and are down to the natural wood assessment and environment.



COMO (IT) • WWW.HEROL.IT • INFO@HEROL.IT

